



# REINVENTING ACCESS

**2019-2020**  
Annual Report



CHERYL SPACE, Library Director

**What a difference a year makes.** As Providence Community Library celebrated its tenth birthday on July 1, 2019, none of us could have anticipated the enormous changes to come. Following an excellent year of growth and innovation in 2018-2019, we were once again on track to beat our best ever figures in terms of attendance in 2019-2020. We saw a consistent increase of about 9,000 visits to library locations per month and our staff were excited to welcome so many new faces, as well as established library users, through our doors.

Then came COVID. When our doors closed in March, how would the Library continue to serve Providence?

## The answer came from our dedicated & innovative staff...

who barely skipped a beat as they created a spectacular lineup of virtual programs, established helpdesks, and curated targeted information and resources for Providence residents. In April, PCL became one of the first libraries in Rhode Island to introduce curbside book pick-up services. As Rhode Island continues to negotiate the pandemic, Providence Community Library continues to adapt its services.

As Director, I am immensely proud of the many ways we continue to serve our community, in these most challenging of times.



2019-20 Providence Community Library Staff (*pre-pandemic group photo*)





PATRICIA RAUB, President, Board of Directors

The results of our community consultation campaign, **More Hours for PCL**, confirmed what we have long known – *that our library users want to spend a lot more time in their libraries*. While the pandemic forces us to delay our efforts to achieve this goal in the shorter term, the Board continues to relay the clear message to City, State and other funders: Providence residents love their community libraries.

**We will keep advocating** for additional funding to deliver those much-requested additional hours, as well as for new resources to help expand and improve access to our services and programs. In summer 2020, we installed equipment to strengthen public WiFi service at all libraries, enabling more people to use the enhanced digital streaming services and virtual programming that are now so integral to our socially distanced lives.

I'm proud of Director Cheryl Space and her staff, who demonstrated flexibility and resourcefulness during a year with unprecedented challenges. I am also grateful to our library users, community partners, and all of the generous donors listed in this Report, many of whom generously responded to several fundraising appeals throughout the year.

To all of you who, in so many ways, help put the "community" in Providence Community Library, thank you. Without your help and support, our work would not be possible.

#### About our Board

Providence Community Library is governed by a Board of Directors consisting of 25 Directors.

Nine Directors serve as "Friends organizations" representatives, one for each of our nine neighborhood libraries. The Mayor of Providence appoints three Directors to the Board; two are members of the community and one is a member of the Mayor's staff. Three more community members are appointed, two by the City Council and one by the Governor of Rhode Island. The Library's staff elects one representative to the Board. The nine remaining positions are elected by these sixteen Directors. The entire Board then elects four of its members to serve as officers.

#### Board of Directors (2019-20)

- Patricia Raub, President  
*(Friends of Wanskuck representative)*
- Tony Aguilar, Vice President (at-large)
- Ellen Schwartz, Treasurer (at-large)
- Rochelle Lee, Secretary  
*(Friends of Knight Memorial representative)*
- Anita Bench  
*(Friends of South Providence representative)*
- Kendra Brewster (at-large)
- Avital Chatto (at-large)
- Joan Dagle  
*(Friends of Washington Park representative)*
- Jordan Day *(Mayoral Staff appointee)*
- Deborah Del Gais  
*(Friends of Mt. Pleasant representative)*
- André Herrera *(City Council appointee)*
- Jean Lamb (at-large)
- Joseph Morra *(Staff representative)*
- Paige Raposa (at-large)
- Pam Vogel *(Governor's representative)*
- Gregory Waksmulski, Jr.  
*(Friends of Rochambeau representative)*
- Zachary Weinberger  
*(Fox Point Friends representative)*
- Cyndie Wilmot  
*(Friends of Olneyville representative)*
- Lynn Zagoudis-Eastridge  
*(Friends of Smith Hill representative)*



# In the midst of disruption, confusion and loss, we still found our way... together.

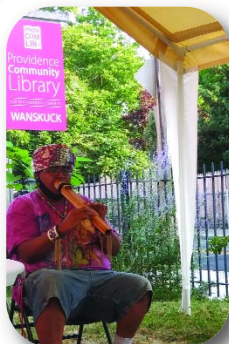


**MP** When her library closed in March due to COVID-19, **Duongrattha Siv**, clerk supervisor and sewing instructor at **Mount Pleasant Library**, used her crafting skills to make sought-after, reusable cloth masks. Making and donating hundreds of masks to others, she also created an instructional video, "How to Sew a Cloth Face Mask", which quickly became one of the most viewed programs on Providence Community Library's **YouTube channel**.



*Normally I would not be able to donate, however, because of COVID 19 I was not able to go to a conference that I have attended for the last 34 years. I can not think of a better way to spend the amount I have saved up for the conference then to donate it to you. I pray that you exceed your expectations and are able to include more children. Many Blessings*

*- Library Patron*



**Seiji Abe** and his colleagues of our partner organization **FabNewport**, working in conjunction with the volunteer collaborative **RI Rapid Solvers Group**, set up a factory line of 3D printers at **Rochambeau Library**, manufacturing thousands of 3D-printed faceshields for front-line health workers in RI.



Many Providence students and their families found themselves in urgent need of library resources in the early weeks of the pandemic and PCL stepped up to help them.

On April 7, the Library began a limited curbside pickup and home delivery service in support of **Rhode Island Governor Gina Raimondo's** statewide Reading Challenge, later expanding it to all nine locations. Patrons warmly welcomed the services and staff fulfilled 425 requests for materials in the first few weeks alone. To provide more options for seniors, families with young children and those with pre-existing health conditions, we continued to offer curbside services after the libraries reopened.



access  
in a crisis



## Inspiring Stories

Portrait subjects Melissa Husband, Beatrice Pulliam and Victoria Tolbert attended a special opening reception for *"Inspirational Women"* at **Mount Pleasant Library** and talked about their moving life experiences with an attentive audience. The traveling multimedia exhibit, developed by the YWCA of Rhode Island, documented the voices, stories and portraits of Rhode Island women of achievement - and of color - and featured outstanding images by Providence Journal photojournalist, **Kris Craig**.

The exhibit was also hosted at **Rochambeau** and **Wanskuck Libraries** during its three-month tour.



## A Dorry Story

Providence Community Library became the local R.I. Chapter of the California-based nonprofit **Drag Queen Story Hour (DQSH)** in 2019. Following its first highly successful *Drag Queen Story Hour*, a seasonal winter Story Time was held at the Graduate Hotel featuring **LaDiva Jonz**. PCL was delighted when DQSH won a **Dorry**, a local arts award, in the category "Reading Series of the Year."



## Feria <sup>del</sup> Libro y Las Artes *de Providence*

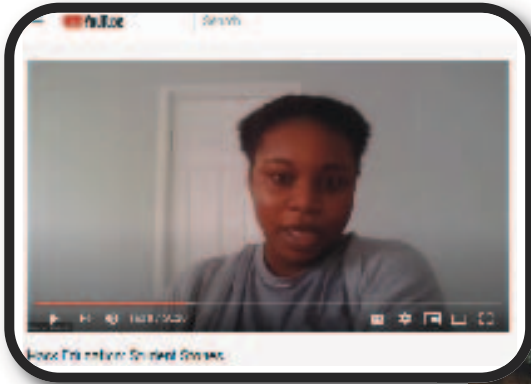
Our fourth **Feria del Libro Festival** was bigger and better than ever. More than 600 visitors met at Providence College's Center at Moore Hall to celebrate multi-lingual Spanish and English literacy and arts through author readings, dance performances, workshops, film screenings and art exhibitions.

Opening remarks by **RI Secretary of State Gorbea** and **Providence Mayor Elorza** mentioned a crucial point:

*"Feria del Libro provides Latinx communities with a culturally affirming but all too rare opportunity to celebrate diverse arts and cultural traditions all in one place - and in Spanish."*







*"Why can't there be more opportunities for students to earn credit and credentials while learning in the community and beyond the classroom?"*

## Hack Education

"We are developing an education system by the students, for the students," said **Deborah Adekunle**, a PPSD student referring to her work as part of the **Hack Education coalition**. This student work was showcased in a series of virtual events this summer as part of a collaboration between Make Your Life (MYL), Venture Cafe, United Way, RI Office of Innovation, and EduvateRI. The goal is to demonstrate the power of Place Based Education and ask the question noted (above right):

PVD Young Makers provides Providence youths with access to both maker-space settings and trained teen mentors to create a unique, hands-on learning opportunity. **Providence Community Library** is a proud partner of this educational initiative, along with FabNewport, Providence Public Library & Rhode Island Museum of Science and Art (RIMOSA).



*"Life isn't one dimensional, explore your creativity, there are no limits".*



## Shell Shocked

**Shell Shock World** is the creation of **Michelle Moreno**, rising college Freshman at CCRI & PVD Young Makers Intern. Michelle developed Shell Shock during her time attending the MET School with start-up materials and equipment sponsored by PVD Young Makers. Michelle's passion for expression shows in her vibrant clothing design. She encourages everyone to pursue what they love.

Michelle has supported a number of PVD Young Makers initiatives and programs during her 2 years with us. She's been a peer mentor for students interested in fashion design and brand development.

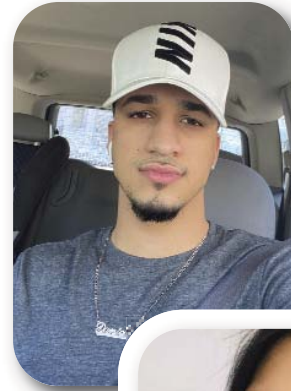
This past summer, she partnered with youth-founded & youth-led organization GenZ: WWTL and created **Shell Shock's Black Lives Matter** clothing line. This line was modeled by the founding directors of Gen Z: WWTL Jaychele Nicole and Isabella James.



access to entrepreneurship

# Graduates in Adverse Times

We are delighted to recognize the five students who diligently attended classes, studied in their spare time and passed the four tests required to earn a **GED in Spanish** during a suddenly curtailed 2019-2020 academic year. While the pandemic prevented us from holding a traditional, in-person graduation event, nothing can stop us from proudly sharing the images and inspiring words of some of our students here!



**Daniel Perez** (Dominican Republic)

*Gracias a la biblioteca y a los profesores que imparten el curso del GED. Me siento una persona capacitada para seguir estudiando y continuar una carrera universitaria. Les agradezco de todo corazón, por toda la ayuda recibida.*

Thanks to the library and the teachers who teach the GED course. I feel equipped to continue studying at the university level. I thank you with all my heart, for all the help I received.

**Mónica A Campoverde** (Ecuador)

*Estoy muy feliz de obtener el GED a través de este programa. El profesor fue muy respetuoso, profesional y nos ayudó mucho. Esto me ayudará a tener éxito en un futuro cercano a medida que elijo mi carrera y oportunidades futuras.*

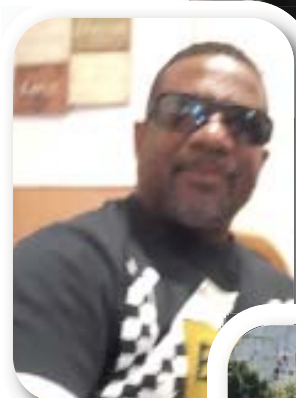
I'm very happy I was able to obtain my GED through this program. The teacher was very polite, helpful and professional with the class. This is going to help me succeed in the near future as I choose my career and future opportunities.



**Marcos Miguel** (Dominican Republic)

*Obtener el GED me ha dado seguridad, confianza en mí mismo y la posibilidad de un futuro mejor. Gracias a la biblioteca por ofrecer este programa y de manera especial al profesor Hipólito Reyes.*

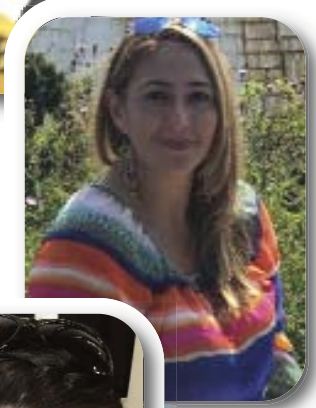
Obtaining the GED has given me security, self-confidence and the chance for a better future. Thanks to the library for offering this program and especially to the teacher, Hipólito Reyes.



**Claudia Paz** (Guatemala)

*Gracias a Dios y al apoyo de mi familia logré obtener el título del GED. El cual me ayudará a abrir las puertas del éxito. No importa la edad que tengamos, con esfuerzo y sacrificio lo podemos conseguir.*

Thanks to God and my family's support I managed to obtain the GED certificate, which will help me to open the doors to success. No matter our age, with effort and sacrifice, we can achieve it.



**Julia Orellana** (Guatemala)

*Obtener el GED fué un desafío y logro personal y familiar. Ahora tendré mejores posibilidades de estudio y trabajo. Gracias a los que organizan las clases en especial al profesor.*

Obtaining the GED was a challenge and personal and family achievement. Now I will have better possibilities for study and work. Thanks to those who organize the classes, especially to the teacher.





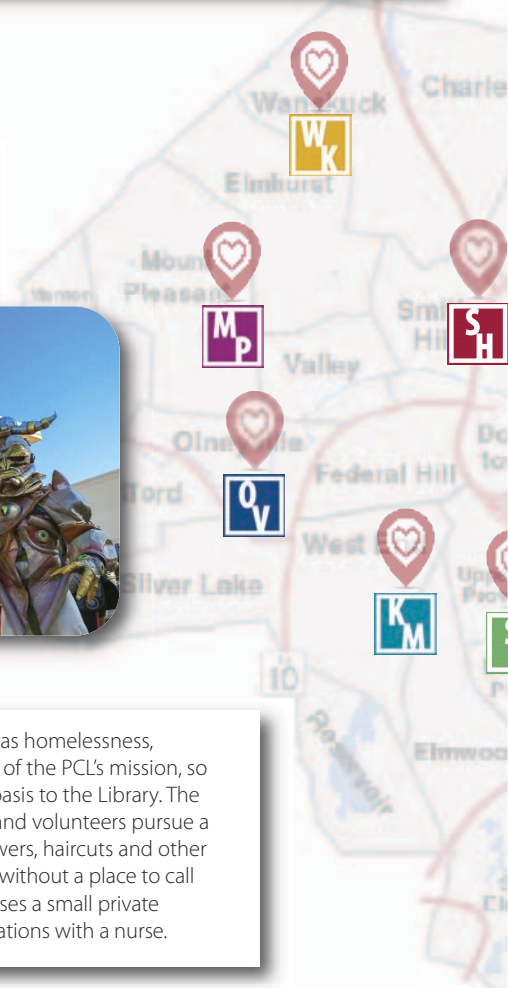


## WANSKUCK

**Maker activity** has become so popular at Wanskuck that the library created a dedicated section of the building into a makerspace. Teen interns led activities to develop youthful business ideas into entrepreneurial initiatives. The library also initiated several outreach efforts to attract more students into the library from local schools.

## MOUNT PLEASANT & OLNEYVILLE

We love our **Neighborhood ComicsFest!** This year's fabulous event was presented jointly by staff of Olneyville and Mount Pleasant and libraries event partners PVD Young Makers, The Wilbury Theatre Group, RISD, and Big Nazo. Many library users cannot afford to visit RI ComicCon so our Neighborhood ComicsFest provides a way to connect youth and adults with local artists and build a sense of community. It's also a great excuse to dress as a superhero and have some fun!



## KNIGHT MEMORIAL

Knight Memorial serves a diverse population of library users, some of whom face challenges such as homelessness, domestic violence and addiction. Supporting our users with relevant services is an important part of the PCL's mission, so we were excited to collaborate with House of Hope and bring **Shower to Empower** on a weekly basis to the Library. The Shower to Empower mobile Unit is one of the many ways that House of Hope CDC's caring staff and volunteers pursue a mission to prevent and end homelessness in Rhode Island. The Unit provides complimentary showers, haircuts and other services to those without a place to call home. It also houses a small private space for consultations with a nurse.



## SOUTH PROVIDENCE

South Providence Library had a very special visitor in March as **Chelsea Clinton** paid a visit to talk about her children's book, *Start Now!*, the elementary companion read to the 2020 Read Across RI choice, *Rising: Dispatches from the New American Shore*, by Elizabeth Rush. The Library was packed with several classes from local schools and all the students were very excited to meet the famous visitor. Thanks to the Rhode Island Center For the Book for inviting PCL and South Providence to host this exciting event.



## ROCHAMBEAU

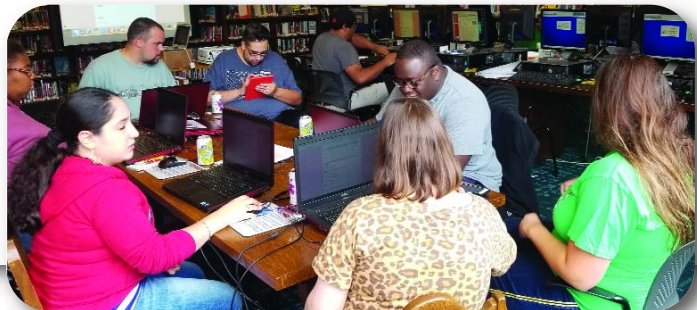
Rochambeau's first **Edible Book Festival** was originally planned as an in-person event, but Coronavirus forced staff to re-imagine it as a purely visual feast. Attracting 21 highly original entries and 350 votes to decide the winners, the Edible Book Festival proved that library events could still succeed even when staff and library users participated from home- as was the case for many weeks. First place was awarded to Jude Brody (11 years old) for "Jaws Cake".



## SMITH HILL

PCL was selected to participate in **Libraries Lead with Digital Skills**, an initiative of the American Library Association and the Public Library Association, sponsored by **Grow with Google**, the tech company's economic opportunity initiative. PCL Digital Services Manager, Stephanie Shea, in collaboration with local staff member Jennifer Romans, received a \$1,000 grant to offer Google Digital Skills workshops to a local Work Opportunities Group and other Smith Hill Library patrons, providing instruction about Gmail, Docs, Drive, Chrome and other in-demand apps. We are proud to report that PCL subsequently was selected as a Grow With Google Spotlight program and Stephanie received a further \$3,000 award for her work leading the workshops.

*Congratulations, Stephanie!*



## FOX POINT



Fox Point Library's beautiful new **Community Mural** made its public debut in October. Painted on the wall surrounding the courtyard of Fox Point Library, the mural is a joint project of Fox Point Library and PVD Young Makers. Library users, local community members and businesses all contributed to the mural, which was designed by Fall River artist, Marina Katayeva. Adler's Design Center & Hardware generously contributed \$3,000 in paint supplies to the project.

## WASHINGTON PARK

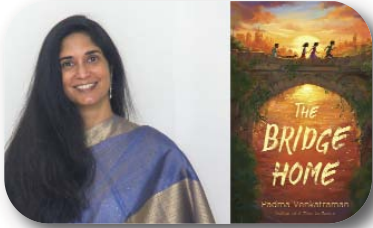


The **Queer Umbrella** class was initially created by PVD Young Maker intern Andrea Gonzalez and artist Fe Hope. Meeting at Washington Park, Andrea went on to develop the class to satisfy the wants and needs of 40 participating LGBTQ teens. Themes included safer sex, consent, healthy relationships, support, and personal growth. Students connected to the mom hugs movement, planned participation in Rhode Island Pride and explored issues of language and culture. A second Queer Umbrella Group was also established at Rochambeau.



## PCL Reads

Retaining a sense of community online was one of the challenges met by **PCLREADS**, a PCL - wide virtual book club, established by **Mount Pleasant's Lee Smith** and **Washington Park's Amy Rosa**, as a direct response to the pandemic. PCLREADS quickly attracted large audiences of 70-80 participants to meetings that also featured live talks with popular authors **Julia Alvarez** and **Padma Venkatraman**.



Lee later reflected:

*"Oddly enough, the virtual environment, with everyone "together" on the Zoom screen, provided more of a sense of intimacy than would have happened at a similar event in a large auditorium."*



Studio 10 team (left to right)  
Front: Lindsay Ladeluca, Meaghan Mooney;  
Back: Doug Monahan, Ryan Pickering, Meghan Kayata



## PCL reaches 10, again

A new partnership is always something to celebrate and this year, PCL found a very special one in the form of NBC-1- WJAR's daytime lifestyle show, **Studio 10**.

In January 2020, Providence Community Library started to make regular studio (and later, Zoom) appearances, presenting a diverse selection of our services and upcoming programs to a television and internet audience in Rhode Island, South Massachusetts and beyond. As newcomers to TV, we are grateful to the friendly and gracious hosts, Meaghan Mooney and Lindsay Ladeluca, Co-host Artie Tefft, Director Doug Monahan, Photographer Ryan Pickering, Producer Meghan Kataya, and Booking Producer Kassi Kivisto for allowing us to share some of the creative and imaginative resources that our Library has to offer with a wider audience.



digital  
access





## WiFi users just love us

Providing digital access is important to PCL's mission. A \$60,000 Community Development Block Grant enabled the Library to purchase and install Access Point units to maximize the range of its free public WiFi signals. Senior residents, young families and people at high risk due to health conditions will benefit especially from the boosted WiFi service, allowing them to access internet, enjoy the Ocean State Libraries eZone, streaming services Hoopla and Kanopy and virtual library programs on PCL's YouTube Channel without the requirement to enter buildings.



## Stream- on with Expanded Service:

Following the successful launch of Kanopy in 2018-2019, which provides access to 30,000 of the world's best films, the Library added Hoopla, another versatile streaming app. Hoopla enables our library users to borrow additional movies, plus music, audiobooks, ebooks, comics and TV shows on their devices, wherever they are. When the pandemic closed libraries, we saw a huge spike in demand for new library cards, eBooks digital services and apps - to which we responded nimbly by providing access to new collections and adding more free digital credits on every card member's account.



## Virtually, Everyone!

When buildings closed, librarians picked up their phones and went virtual! PCL blazed a trail in developing online programs as other Rhode Island libraries asked for advice and followed the model.

**YouTube** Before long, PCL's YouTube Channel was bursting with programs for all ages, including Harry Potter Read Aloud, crafts and model building, STEAM projects and science experiments. In Providence, where 43 percent of the population are Latinx, story times and activities created by bilingual staff are particularly important. Our weekly bilingual American Sign Language story times were frequently among the most viewed programs, creating a new bridge to the deaf community.

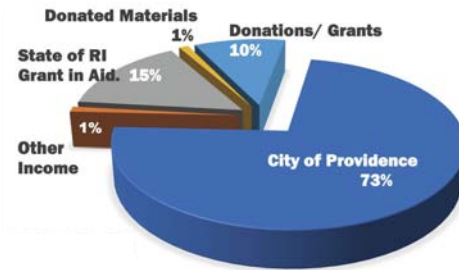


# Useful Stats & Facts

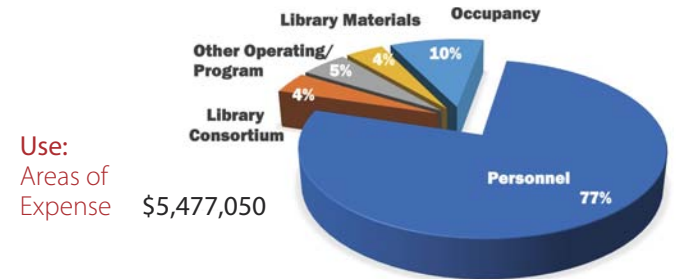
Library Use	Staff	67
	Patrons	41,635
	Locations	9
	# of Visits	522,961 (>1% Curbside)
	Computer (Lab) use	78,555
	Meeting Room(s) Used	781
	Attendance	8,729
Online Use	Web visits	343,568
	WiFi use	67,770
Assistance	Reference/ Questions	30,296
Circulation	Physical	302,342 (2.1% Curbside)
	Digital	86,369
	Total	388,711
Library Programs	# of Programs	5,699
	Attendance	65,977

# Our Resources & Use

Snapshots of Providence Community Library's operating finances (unaudited) for the fiscal year July 1, 2019 - June 30, 2020

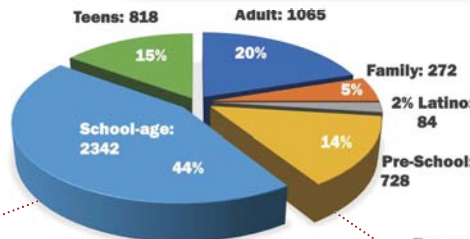
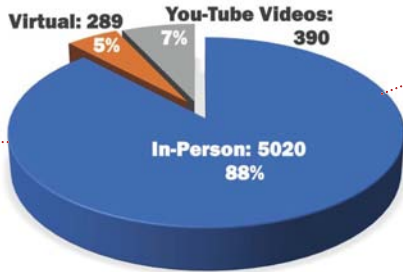


Resources:  
Sources of Funding  
\$5,477,050

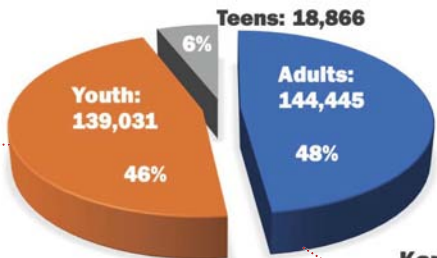
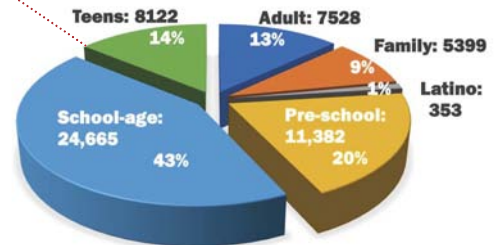


Use:  
Areas of Expense  
\$5,477,050

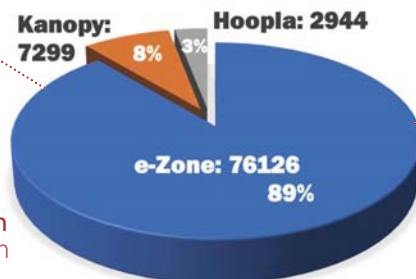
Programs Delivered by Type



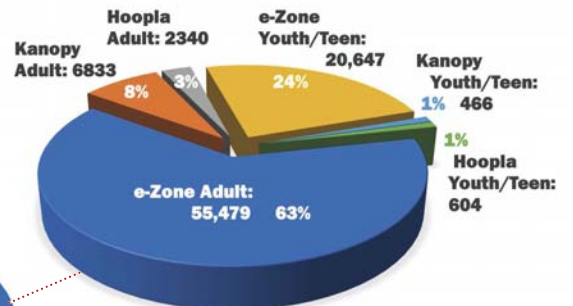
Programs Attended by Age Group



Physical Circulation by Age Group



Digital Circulation by Platform



Digital Circulation by Platform & Age Group



access to metrics



# Signs of Generosity

None of the many resources, programs and activities shown in this Annual Report would have been possible without the help of all our supporters. Here is just a small sampling of its meaning, with our sincere gratitude for all that you do!



*"I give to PCL because libraries, especially libraries like the Providence Community Library, are the soul of the community, uniting and enlivening us. We need and appreciate it now more than ever".*

*- Linda Kushner*

Earlier this summer, our supporters responded to Providence Community Library's appeal to help support a reimagined Summer Reading Program. As a result of their incredible generosity, Providence Community Library was able to exceed its target of \$25,000. With the donations of **\$28,829**, we were able to make our innovative **Passport to Summer Learning Takeaway Bags** the big success of the summer!

- **8,000** Takeaway Bags were created and picked up
- **1,144** kids were able to benefit from the program
- **100%** of their parents agreed that the program kept their kids reading and learning throughout summer
- The top 4 favorite Takeaway Bags included these themes:
  1. Space (80%)
  2. Nature (50%)
  3. Music (40%)
  4. Ocean (40%)



*"I give to PCL because it provides key services to our community with a big loving heart. The warmth and generosity of its staff, the wide open doors, and the world of resources inside the buildings are all amazing resources for our city. I'm not sure where Providence would be without it. "*

*- Avital Chatto*

## A Legacy for the Library

Providence Community Library would like to thank our distinguished **Legacy Society 2009** members for including us in their estate plans. Your gifts will ensure Providence Community Library is enjoyed for generations to come.

To learn more about the Legacy Society 2009 please call 401.467.2700 x1605 or [LegacySociety2009@provcomlib.org](mailto:LegacySociety2009@provcomlib.org).

## With Gratitude...

Ellen Schwartz - PCL Board of Directors (Treasurer 2009 – 2020)

One of our original Four Founders, Ellen helped with the initial operating agreement with the City to establish Providence Community Library in 2009. For the subsequent eleven years, Ellen spent an average of 20 hours a week, working in tandem with COO Sue Gibbs, creating and balancing budgets, preparing for the annual Audit, State report, and tax returns. Ellen's financial skills also helped us apply for several significant grants to improve library buildings. In addition to Board Treasurer, Ellen has attended countless library programs. She has always found time to drop in and wish well retiring staff members and deliver cupcakes on Staff Appreciation Day. As a dedicated volunteer ESL tutor, Ellen has attended all our GED graduations, as proud of the new graduates as their own families.

*Ellen, thank you for everything you have done for Providence Community Library!*



**\$3,000,000 +**

City Of Providence

**\$500,000 +**

State of Rhode Island

**\$100,000+**

United Way of Rhode Island

**\$50,000+**CDBG grants thru City of Providence  
Dept of Planning and Development**\$20,000 +**FabNewport  
Mabel T. Woolley Trust**\$10,000 +**Elms Family Fund  
House Fiscal Office  
IGT  
June Rockwell Levy Foundation  
Linda and Harold Kushner  
Prescott Knight Trust  
Providence Journal Charitable  
Legacy Fund  
Rhode Island House of Representatives  
Rhode Island Senate  
Russell Church  
The Rhode Island Foundation  
Anonymous**\$5,000 +**Deborah Venator  
Kathryn Fisler and  
Shriram Krishnamurthi  
Severus Foundation  
Stalwart Productions**\$2,000 +**American Library Association  
Andrea Sarokin  
Cheryl Space  
Elizabeth Perkins  
Friends Of Rochambeau  
Henry and Peggy Sharpe  
Jay Bright  
Joseph Chazan  
Larry and Barbara Schoenfeld  
Michael and Karen Isenberg  
Robert Huseby  
Textron Matching Gift Program**\$1,000 +**Joel Cohen and Andrea Toon  
Sara Dorsch  
Jonathan and Ruth Fain  
Jim and Margaret Gardner  
Jay Glasson and Victoria Smith  
Bernard Nussbaum  
Judith and Richard Plotz  
Mary Sherlock  
David Lichtenstein and Rebecca Silver  
Mary Speare  
Shivan & Jyothi Subramaniam  
Jeffrey and Pamela Vogel  
Keith and Rosmarie Waldrop  
Joan Gelch and Morris Weintraub  
Weisberg Family Foundation  
Pariseault Builders, Inc.  
Victor & Gussie Baxt Fund**\$500 +**Kaileigh Ahlquist  
Ellen Schwartz and Stephen Ciesluk  
Phoebe Blake and Peter McClure  
William and Frances Camacho  
Kellie Cavaler  
Avital and Andrew Chatto  
Adelaide Comegys  
Gilbert and Diane Conover  
Dorothy Dumont  
Nicholas and Alice Fawzi  
Jordan Frank and Laura Levine  
Nancy Fritz  
Berne Greene  
Christine Heenan  
Elizabeth and Lee Hobbins  
David and Barbara Hunger Karoff  
Marie Langlois  
Richard and Judith Lappin  
John Lattera and Amy Fulton  
Suzanne and Terrence Murray  
Rebecca Preston  
MJ Robinson  
Frederick Roses  
Peter Scheidler  
Deborah Schimberg  
John Schlinke and Carol Lasch  
Denman & Margaret Scott  
Colgate Searle  
Jennifer Van Reet  
Mary Wall  
Neighborhood Health Plan of  
Rhode Island**\$250 +**David Abbott  
Tony Aguilar  
Suzanne Barksdale  
Jean Boulger  
Richard and Inge Chafee  
Mary Clark  
Joan Dagle  
Jane A Desforges  
Betsy Dietrich  
Ann Dodge  
Justine Dunlap  
Lynne Ende  
Barbara Feldman  
Deborah Furia  
Susan Glogovac  
Vartan Gregorian  
Daniel Grombacher  
Dan and Sharon Hendriksen  
Loring Holden  
Mary and Bill Hollinshead  
Betty Jaffe  
Patricia Kammerer and Erich Stephens  
Judy Kaye  
Jennifer Kiddie  
Julius Kling  
Anne and Bruce Landis  
Cornelia and Robert Lanou  
Jennifer Laurelli  
Jane Linden  
Robert and Theresa Mathiesen  
Karen McAninch  
Mr. & Mrs. Norman E. McCulloch, Jr.  
Sophia Narkiewicz  
Kevin and Amy Orth  
Jill Pearlman  
Mercedes Quevedo  
Patricia Raub and Robert Goff  
Anne Riccители  
Micah Salkind  
Elizabeth Samuels  
Monica and Frank Schaberg  
Abigail Test  
Christine Townsend  
William Trimble  
Scott Wolf and Joyce Krabach  
Anonymous  
Pearle and Martin Silverstein  
Foundation  
Helene and Bertram Bernhardt  
Foundation  
Gertrude N. and Seebert J. Goldowsky  
Foundationaccess  
to support



**\$100+**

Peter Adamy and Patricia Flam  
 Tony Affigne  
 Simone Ahlborn  
 Edith Ajello  
 Kenneth Anderson  
 Jim Barnes  
 Marjorie Beach  
 Robert Bedick  
 Anita Bench  
 Oliver & Martha Bennett  
 Edgar Bessette  
 Patricia and John Biasuzzi  
 Judith Bloom  
 Julie and David Boch  
 Michael Bordonaro  
 Andrea Bosgraaf  
 Sara Bradford  
 Kendra Brewster  
 Phyllis Burke  
 Rod Burkett  
 Donna Cameron  
 Brenda Carr  
 Jori Ketten and Chris Erway  
 Judi Cicero  
 Reid and Martha Cooper  
 Ian Corbyn  
 Jennifer Cosey  
 Mary Curtin-Clinker and Duane Clinker  
 Cheryl Daigle-Stein and Karen Daigle  
 Murray & Judith Danforth  
 Deborah Del Gais  
 Thomas Deller  
 Brian Demers  
 Gerald Deschepper  
 Elaine Dickstein  
 Thomas DiSanto  
 Patrick Donohue  
 Amy and Jerrold Dorfman  
 Carla Dowben  
 Helen Drew and Kenneth Payne  
 Richard & Sheila Dvorin  
 Chris Edmonds  
 Herrera Family  
 Susan Feeley  
 Mary Frappier  
 Barbara Garabedian  
 Rebekah Gardner  
 Leslie Gell  
 Lou Giancola and Pamela High  
 Gayle Gifford  
 Jeremy Giller  
 Brian Goldberg

**\$100+**

Andrea Goldschmidt  
 Richard Gregory and Louise Thorson  
 Eva & Joshua Gutman  
 John Hafferty  
 Marguerite and Spencer Hall  
 Steven Hamburg and Sarah Barker  
 John Harkey  
 Lynne Harlow  
 Barbara Harris  
 Lynn Harris and Ross Harris  
 Marianne Harrison  
 Mary Hazeltine  
 Providence Health Centers Inc  
 Arnold and Sandra Herman  
 Cynthia Hiatt  
 Hope and David Hirsch  
 Patricia Hoffman  
 Rhonda Hospedales  
 Robert and Laura Howe  
 The Hudson Foundation  
 Martin and Betty Ann Israelit  
 Jen Iwasyk and Robert Bozikowski  
 Molly Jacobson  
 Barry and Ellen Jagolinzer  
 Matthew Jankowich and Colleen Kelly  
 William and Audria Jennings  
 Michael Jurgensen  
 Coppelia Kahn  
 David and Elizabeth Kaplan  
 Caroline Karp  
 Jen Kennedy  
 Mary Louise Kennedy  
 Paula and Richard Keogh  
 Cecily Kerr-Ziegler  
 Steven Knapp  
 Nina Kohli  
 Susan Korte  
 Peter Kramer and Rachel Schwartz  
 Rajee Krishnan  
 Jake Kuhn  
 Tony Adams & Kate Lacouture  
 Peter and Marnie Lacouture  
 Steven Lampert  
 Ruth Landow  
 Carolina Donnantuoni and Richard Lang  
 Rochelle Lee  
 Navah Levine  
 Scott Levine and Leon Andrews  
 Carol Levitt  
 Janice Libby  
 Paul & Pamela Lietar

access to  
 support

**\$100+**

Ellen Lynch-Kinnane  
 Emily Maranjian  
 Susann Mark  
 Terrance S. & Dorothy D. Martiesian  
 Brian Masefield  
 Susan Maycock  
 Donald and Mary McClure  
 Virginia McLoughlin  
 Marjorie and Sattar Memon  
 Kennon Miller and Jennie Newkirk  
 Thom Mitchell  
 Scott Molloy  
 Martha Moreno  
 Sarah Morenol  
 Yvonne Morin  
 Michele Jenness and Robert Morrow  
 Bill and Stephanie Mott  
 Nancy Nicholson  
 Laura Nordstrom  
 Elizabeth and Hans Olsen  
 Valerie Ottaviano  
 Richard Pederson  
 Gabriel Pleasants  
 Fred & Lori Polacek  
 Stephen Porder  
 Gracemary Russell and Susan Prouty  
 Kurt Raaflaub  
 Anisa Raoof  
 Paige Raposa  
 Caroline Reed  
 Samuel and Nancy Riffle  
 Arthur and Judy Robbins  
 Stephanie Robinson  
 Charles & Martha Rogers  
 Amy Romero  
 Sharon Rounds  
 Kathleen Rourke  
 Mark and Christine Rubinstein  
 Nancy Safer  
 Jonathan Samit  
 Michael and June Scanlon  
 Lisa Schachter  
 John Schlinke  
 Jeffrey Schreck  
 Emily Scottgale  
 Richard Sedano  
 Stephanie Shea

**\$100+**

Sally Shwartz  
 Rebecca Siddons  
 Gretchen Dow Simpson  
 and James Baird  
 Barbara Slaughter  
 Susan Smulyan  
 Jill Spohn  
 Emma St. Germain  
 Michael Stein  
 Meredith Stern  
 T Christine Stevens  
 Ethel Tamar Katz and Edward Hardy  
 Caitlin Parker and David Thaggard  
 Joan Tomaszewski  
 Philip and Sophia Torgan  
 Thomas Trenn  
 Bob & Pat Trudeau  
 Kim Twitchell  
 Rosalynde Vas Dias  
 Cynthia Ward  
 Joann Watson  
 Alice and Peter Westervelt  
 Deborah Wilde  
 Lucinda Wilmot  
 Kenneth & Michelle Wong  
 Connie Worthington and Terry Tullis  
 Henary Yan  
 Sam and Lauren Zurier  
 Wrap for a cause at Boscov's  
 Capital City Community Centers, Inc.  
 RI State Employees Charitable Appeal (7)  
 Community Health Charities  
 Asociación Ecuatoriana De Rhode Island  
 Anonymous (8)

**\$50 +**

Virginia Adams  
 William Aldrich  
 Paul Alexander  
 Samantha Andersen  
 Eric Anderson  
 Eva Anderson  
 Mikaila Arthur  
 Yamil Baez  
 Leslie Baker  
 Alexander Balsley  
 Suzanne Barrett  
 Patricia Becker  
 Aurelie Bergognat

**\$50 +**

Eric and Cristin Bilodeau  
 Murray and Judith Blackadar  
 Cathleen Blanchette  
 Stefanie Blankenship  
 Herman Brewster  
 Robert Bright  
 Arnold & Jane Bromberg  
 Anna and Andrew Browder  
 Melissa Buttaro  
 Annie Cappuccino  
 Janet Caretti  
 Barbara Carpenter  
 Deborah Carr  
 Thomas and Susan Chartier  
 Kenneth Chay  
 Joanna Ciliberto  
 Kim and Stephen Clark  
 Roger and Beverly Clark  
 Nicole Coggins  
 Barbara Weindling and David Cohen  
 Denise and Joseph Cornwall  
 Jennifer Cortez  
 Camila Crews  
 Paul Cummings  
 Maya Dehart and Adam Wienert  
 Christine Low and Marc Demarchena  
 Judy Demers  
 David and Sally Dillon  
 Maude Dorr  
 Susan Erkkinen  
 Barbara & Ken Feibelman & Orenstein  
 Nina Shah and Reid Feller  
 Pedro Felzenswalb and Caroline Klivans  
 Robert and Susan Fine  
 Lois Finkel  
 Emily First  
 Joseph Fisler  
 Elliot Fleming  
 Paul Flynn  
 Helen Flynn  
 Marilyn Franklin  
 Justin Freitas  
 Doug Friedman  
 Joan Garfield  
 Robert Garzillo  
 Janice Gerundio  
 Colin Gleason  
 Maria Goncalves  
 Jeff & Karen Green

**\$50 +**

Flora Greenan  
 Judith and Samuel Greenblatt  
 Katherine Parsons and Darren Griffis  
 Michelle Grove  
 Mark Guyer  
 Megan and Ryan Haggarty  
 Andrew Hall  
 David & Dorcas Haller  
 Brooke Hammerle  
 Abina Hansen  
 Timothy Herbert  
 Wendy Holmes  
 Lynn Holstein  
 Roberta Houllahan  
 Mary Houston  
 Amanda Howard  
 Paul & Jacki Huot  
 Janet Isserlis  
 Amanda Izenstark  
 Alban Jacquin  
 Judy and Stephen Jagolinzer  
 Janet Katz  
 Claire Kearney  
 Gabor Keitner  
 William & Linna Kite  
 Caroline Kory  
 Janet Kovach-Fuentes  
 Ken Kozlowski  
 Ron Laffey  
 Donna Lancaster  
 Joseph Landry  
 Matthew Lawrence  
 Michelle Le Brun  
 Rebecca Lebeau  
 Evelyn Lincoln  
 Hasan Khan and Karen Longeteig  
 Deirdre Lovecky  
 Diane Lynch  
 Beatrice MacCracken  
 Jennifer Greenwood  
 and Robert MacDonald  
 Harriet Magen  
 Diana Maher  
 Michael & Marion Mariner  
 Saul Martin  
 Hannah Matheny  
 Elizabeth Maynard  
 Anne McAuliffe-O'Donnell  
 Mary McCabe  
 Bill McGowan  
 Daniel McGuire



**\$50 +**

Jane McIlmail  
 Charlie McNeil  
 Dayus and Harold Metts  
 Theo Meyer  
 Suzanne Michaud  
 Arnold and Helen Mintz  
 Maureen Montecalvo  
 Susan and Samir Moubayed  
 Louise Moulton  
 Friends of Mt. Pleasant Library  
 William and Susan Newkirk  
 Mildred Nichols  
 Elsie Nickerson  
 Darek Niklas and Rachel Filinson  
 John & Patricia Nolan  
 Cheryl Noll  
 Tara Nummedal  
 Lana and John O'Brien  
 Johanna O'Connor  
 William O'Neill  
 Margaret and Michael Owen  
 Carol and Maria Panaccione  
 Anna Parello  
 Kenneth and Anne Pariseau  
 Joseph Petteruti  
 Shawn Plouffe  
 Gail Porter  
 Diane Postoian  
 Lawrence Pryor  
 Dina Quezada  
 Felice and Meisel, Joseph Ramella  
 Steffen Rasch  
 Cynthia Reed  
 Suzanne and William Reilly  
 Nicholas & Joan Retsinas  
 Harlan & Beverly Rich  
 Martine Richards  
 Diane Roberts  
 Amelia Rose  
 Norma Rossi Mead  
 Shelley Roth  
 Joan Gorman and Jose Ruiz  
 Bonnie Ryvicker  
 Carole Sammartino  
 Barry and Libby Schiller  
 Helaine Schupack  
 Feather Sedam  
 Robert Segal  
 Narmin Shahid  
 Bruce Shaw and Judith Gibbs-Shaw  
 Eloise Shea-Wyatt

**\$50 +**

Lucille Sherlock  
 Tomoko Shibusawa  
 and Kevin Turbitt  
 Priscilla Shube  
 and Wayne Rosenberg  
 James Shuster  
 Susan Sikov  
 Michael & Carol Silver  
 Duongrattha Siv  
 Lee Smith  
 Dino Smith  
 Judith Smith  
 Ondine Sniffin  
 Daryl & Ann Stahl  
 Mary Staples  
 Marvin and Miriam Stark  
 Joy and Jared Starnino  
 Josiah Strandberg  
 Charles & Barbara Sturtevant  
 Steve Stycos and Chris Herbert  
 Lee Teverow  
 Tom Tobitsch  
 Jen Riley and Kathleen Torrens  
 Rosanne Trissler  
 Nancy Tucker Whit  
 Eva Vargas  
 Rachel Atlas Venditto  
 Jennifer Walker  
 Amy Ward  
 Alan Wartenberg  
 Eugene Weinberg  
 Barbara Wheeler  
 Mary Williams  
 Ada Winsten  
 Susan Wood  
 John Woolsey  
 Kathryn Worthington  
 Nicholas Yarnold  
 Andrew Yurgold  
 Roger and Rosemary Zehntner  
 Joyce Zinno  
 Exxon Mobil Foundation  
 Amazon Smile  
 Boscov's  
 Wepay  
 Himalayan Group, Inc.  
 Anonymous (7)

access to  
 support

**\$1- \$49**

Rebecca Adams  
 Lauren Alianiello  
 Heather and Jason Aliotta  
 Peter and Susan Allen  
 Hamilton and Irene Allen  
 Krystina Almon  
 Joel Alpert  
 Norma Anderson Family Trust  
 Sarah Antaya  
 Roberta and Kenneth Bailey  
 Charles and Elizabeth Bakst  
 Helena Barros  
 Dorothy Becker  
 Katherine Begin  
 Stephen and McEleny, Brian Berenson  
 Barbara Berking-Dalzell and David Dalzell  
 Renee Bessette  
 Patricia Betts-Weiner  
 Ellen Bigler  
 Hamid Bijari  
 Karen Borger  
 Edward & Anne Bozzi  
 Joan and John Breen  
 Mary Brennan  
 Brian Brennan and Gregory Tomamichel  
 Carolina Briones  
 Renee Brochester  
 J. Brooks  
 Denise Brophy  
 Daniel and Lisa Brososky  
 Erika Brown  
 Katherine Buchanan  
 Thomas and Janet Buckley  
 Nancy Buron  
 Maritza Burrows  
 Linda Butler  
 David Cashman  
 Galina Chan-Fu  
 Steven Chianesi  
 Robert & Margo Chiappinelli  
 Marisa Chock  
 Sajid Choudhury  
 Nina Ciniglio  
 Avram & Maxine Cohen  
 Nina Coppolino  
 John Cotoia  
 Ian Cozzens



**\$1- \$49**

Stacy Cristo  
 Barbara Sucoff and Katrina Cubina  
 Marie and Edward Cumiskey  
 Elizabeth Dabanka  
 Norman Dakake  
 Macy Daly  
 Louis D'Amario  
 Linda D'Ambra  
 Ashley Danchuk  
 Elizabeth Daniels  
 Jordan Day  
 Kathryn de Boer  
 Fausta De La Rosa  
 Milvia De Moya  
 Reyna Delacruz  
 Elisaveta and Valentin Dichenko  
 Alyssa Dionne  
 Joseph Fink and Sarah Disabatino  
 Stacey Dodier  
 Alex Hurwitz and Abigail Donaldson  
 Timothy Donovan  
 James Donovan  
 Erin Drew  
 Paula Duesing  
 Norine Duncan  
 Kathryn Dunkelmann  
 Rosemary Durham  
 Jennifer and Gregory Edge  
 Erica Elden  
 Gail Elliot  
 Elissa Emerson  
 Timothy Empkie  
 Tara Emsley  
 Cheryl England  
 Laura England  
 Kevin and Madeleine Esch  
 Nicole Ewing  
 Meghan Fair  
 Michael Falocco  
 Frank Faltus  
 Silva Family  
 Temple Fawcett  
 Angela Simpson and Clifford Fields  
 Emilia Figliomeni  
 Liliana Fijman  
 Margaret Finn  
 Corey Fitzgerald  
 Kathleen Flores  
 Faith Fogle

**\$1- \$49**

Robert Fouser  
 Beth Fouser  
 Anneke & David Frazer  
 Scott Freschet  
 Alana Frutkoff  
 Martin & Robyn Furman  
 Joan Gadol  
 Murray and Rosalyn Gereboff  
 Maryam Ghatee  
 Karen Gilbert  
 Anisha Gill  
 Sarah Gleason  
 Elizabeth Goddard  
 Diane Goldman  
 Vielca Gonzalez  
 Vidya Gopinath  
 Catherine Gorman  
 Charles Gormley  
 Sharon Groh-Mintz  
 Judith Grooters  
 Lucy Guastello  
 Hector and Sucely Gudiel  
 Alan Gunther  
 Erin and Bill Haas  
 Philip Hall  
 Janet Harris  
 Bruno and Janet Harris  
 Elisabeth Head  
 Nancy Henry  
 Jose Hernandez  
 Ana Hernandez  
 Sophie Higgins  
 Priya Hirway  
 Hazel Hollmann  
 Jill Holloway  
 Andrew Horwitz  
 Kristen Hudgik  
 Amelia Hunter  
 Miriam Hwang-Carlos  
 A. Can Inci  
 Marcela Iurinic  
 Judith Izzibudal  
 Mike Jablecki  
 Petra Jenkins  
 Colleen Johnston  
 Thomas Jones  
 Gwenette Kangis  
 Joelle Kanter  
 Susan Kashdan

**\$1- \$49**

Brooke Kaufman  
 Rebecca Kearney  
 Catherine Kelly  
 Carol Kent  
 Rebecca Kessler  
 Mikhail and Maria Khokhlovich  
 Bruce and Pamela Kilstein  
 Brendan and Katherine Kinnell  
 Jenet Kirschenbaum  
 Farrel and Barbara Klein  
 John and Berit Kosterlitz  
 Maureen Krasnow  
 Richard and Bernice Kumins  
 Jean and Mark Lamb  
 Bridget Landry  
 Elizabeth Laposata  
 Ngi-Ing Lau  
 Joan S Leland  
 Kate Lentz  
 Varda & Robert Lev  
 Judith Litchman  
 Elia Lopez  
 Nadia Mujahid  
 Lisa Maloney  
 Peter and Kathryn Mandel  
 Rahul Mangaldas  
 Omaris Maria  
 Eugenia Marks  
 Mary and Ronald Martinez  
 Kurt Mayer  
 David and Gina Mazza  
 MaryAnn McCann  
 Hank McCartin  
 Robert Medeiros  
 Ana Mendiburu  
 Arthur and Marie Mendonca  
 Janice Molinari  
 Maria Monteiro  
 Meredith Moore  
 Susan Moore  
 Elizabeth A Morais  
 Joseph Morra  
 Yelin Mota  
 Rosemary Murphy  
 Domenic and Nancy Napolitano  
 Jissel Navarro  
 Rita Navilliat  
 Dawn Nero  
 Martha and Louis Nielsen  
 Kerrie Nunez  
 Alozie Nwosu  
 Katherine O'Kane



access  
to support

**\$1- \$49**

Lisbeth OBrien  
 Dennis O'connell  
 Michelle Olson  
 Yaruska Ordinola  
 Oleg Ovcharenko  
 Nancy Owen  
 Thomas Padula  
 Vanessa Palomo  
 Mandar Parab  
 Penelope Pare  
 Elizabeth Pasternack  
 Eileen Pavese  
 Lindsay Kaplan and Kevin Pearson  
 Jesus Pena  
 Sheela Percelay  
 Christine and Vozamer Perkins  
 Pasquale Petrucci  
 Karen Pilla  
 Jeremy Plante and Kara Ritchie  
 Jean Plunkett  
 Josh Pomplun  
 Mary Potter  
 Thomas Pouliot  
 Katherine Prevost  
 Maria Prus  
 Laura Ramsey  
 John and Harriet Reed  
 Randall Rice  
 Rick Richards  
 Jacob Richman  
 Mary Robinson  
 Susan Rodgers  
 Lee Rodman  
 Catherine Rolfe  
 Judy Rosenberg  
 Kathryn Roth  
 John & Wendy Roworth  
 Erin Royal  
 Sandra Rubin  
 Andrew and Margaret Sabo  
 Christopher and Nada Samih-Rotondo  
 Mara Santomaro  
 Richard and Roxana Sasse  
 Caroline Scherzer  
 Karen Schiff  
 Lucie Schmidhauser  
 Catherine Schneider  
 John Scolaro  
 Andrea Scott  
 Deborah Pearlman and Ellyn Shander  
 P Shapiro  
 Jeffrey & Fredda Sharfstein

**\$1- \$49**

Robert and Sarah Shaw  
 Myra Shays  
 Carrie Shippers  
 Yaozhu Shogenji  
 Gayle Simmons  
 Charles Simmons  
 Caldwell Smith and Alice Benedict  
 Nicholas Sofios  
 Sigfrido Sone  
 Taylor Spalt  
 Rachel Spaulding  
 Steven Splinter  
 Pamela Steager  
 Jenn Steinfeld  
 Ilira Steinman  
 Cliff and Karen Stern  
 Desnee Stevens  
 Jennifer Stevens  
 Alan and Linda Stockdale  
 Victoria Strang  
 Laura Strauss  
 Julia Sullivan  
 Charles Sweigart  
 Pauline Talbott  
 Janet Taylor  
 Jose Tejada  
 Robert Tevyaw  
 Aidan Payne and Riley Thompson  
 Mary Trottier  
 Lynne Tucker  
 Tomoko Shibusawa and Kevin Turbitt  
 Kris Turgeon  
 Marina Tyquiengco  
 Pieter Van Sciver  
 Ratk Veronneau  
 Annie Voss-Altman  
 Gregory Wakszulski  
 Alisia Waller  
 H. Wast  
 Ted Watson  
 Marlene Strom and Mark Weber  
 Shana Weinberg  
 Zachary and Shari Weinberger  
 John West  
 Brent Wetters and Carrie Best  
 Ren Whitaker  
 Dhana Whiteing  
 Jon & Barbara Wigren  
 Michael Williams  
 Charlene Williams  
 Meaghan Wims  
 Lynn Zagoudis-Eastridge

access to  
 support

**\$1- \$49**

Rachel Zerlin  
 Martha Zimmerman  
 Samuel Zwetchkenbaum  
 Funeral Consumers Alliance  
 of Rhode Island, Inc.  
 James Spicuzza  
 JC Swain Enterprise  
 Anonymous (27)

**There's room for a few more...**

If you would like to join in supporting PCL, visit us online at [provcomlib.org](http://provcomlib.org), or call 401.467.2700 x1605

**In-kind listing:**

Tony Aguilar / New Flavor Media  
 Rob Cagnetta / Heritage Restoration  
 Kasey Carr  
 Vince D'Angelo / Graphitalia  
 Nella Davis  
 Bill and Tammie Delmage  
 De Luise Bakery  
 Dunkin' Donuts (Manton Avenue)  
 El Eden  
 The Family Cake Company  
 Frey's Florist  
 Friends Groups of PCL  
 The Graduate Hotel  
 Michael Graff  
 Gary Jacques  
 Inez Jason  
 LaDiva Jonz  
 Lowe's  
 Oscar Mejias/ Rhode Island  
 Hispanic Chamber of Commerce  
 Pariseault Builders  
 Providence Community Health  
 Centers  
 Raising Readers in Rhode Island  
 Regency Plaza Apartments  
 Rhode Island Black Heritage Society  
 Rhode Island Black Storytellers  
 Robert's Deli  
 Mark Saccoccio  
 Sal's Bakery  
 Ellen Schwartz  
 Walmart  
 Cyndie Wilmot

Providence  
Community  
Library

OUR NEIGHBORHOOD LIBRARIES



Providence  
Community  
Library

P.O. Box 9267  
Providence, RI 02940  
401-467-2700  
www.provcomlib.org



## open access:



Recently completed building renovations now make the entrance to **Knight Memorial Library** more accessible for those in need of special assistance.

## the last word(s):

Comments from our patrons and partners about PCL and more access...

*"The public libraries are part of what makes our city great .. adults and students need a place to study and to use the computers and educational resources."*

- Michelle Sullivan, Supporter and petition signatory

*"I've started seeing benefits from adult courses on digital tools/platforms from PCL and there needs to be more of them!"*

- Erin Read, Supporter and petition signatory

*"My children got great starts at the libraries, We need longer hours...so kids can have constructive outlets."*

- TyEisha Rivera, Supporter and petition signatory

*"I currently partner with PCL to provide an early childhood music program. More hours open at the Library would mean greater access for young children and their adults to a program like mine."*

- Karen Isenberg, Program Partner

*"I don't have anything to do on the weekends. I wish this [library] was open then so I could take my little brother."*

- Matthew Sucuqui, Young Voices & PVD Young Makers

*"Providence Community Library is a dynamic partner. They .. are always looking to make good on their mission to serve patrons."*

- Steve Heath, Executive Director, FabNewport

*"It's amazing that we have an utterly free resource in Providence Community Library that not only gives patrons access to books and computers but is also a hub for the growing and evolving creative culture of our city."*

- Walker Mettling, Artist, Providence Comics Consortium

More public comments can be found online at:

[www.ipetitions.com/petition/mayor-elorza-we-need-more-library-hours](http://www.ipetitions.com/petition/mayor-elorza-we-need-more-library-hours)

The petition formed part of the **2019 More Hours** advocacy campaign.

Connect with us online @

