



Providence **Community** Library
OUR NEIGHBORHOOD LIBRARIES

Staff, volunteers, artists and teachers ...



...continuing to make a difference for our Providence neighborhoods

Annual Report
2010 — 2011



MARCUS MITCHELL

President, Board of Directors

Friends,

Thank you and Well Done! Together, we have reached another year filled with milestones and victories in the midst of a momentous national economic crisis! Our 2010-2011 program year was filled with great challenges, which may have spelled disaster for many organizations, but your dedication and support have enabled the Providence Community Library to emerge by completing Phase I (stabilization of the library system and establishing the PCL infrastructure) and move directly into Phase II (program/partnership expansion and branding). Your fortitude was invaluable and denotes the very spirit on which the PCL was founded.

The Wall Street Journal predicted that 5000 not-for-profit organizations would close in 2010 due to the national economic crises and indeed, many were lost. Newly established organizations were particularly at risk, and many venerable corporations were devastated, as well as several cities and states. We do not live in a vacuum as we helped thousands of patrons with our services. Your strength, ingenuity and trust have enabled us to weather a great storm, and position us to move forward and continue our vision to create an unparalleled library system for the citizens of Providence and Rhode Island.

An African proverb says, "Smooth seas do not make skillful sailors." In our first year, PCL established mechanisms that displayed our talents, dedication and determination by posting accomplishments that would make fortune 500 companies envious. Our second year presented abnormal challenges that have destroyed other organizations and companies. The transition of our new executive director, the threat of building lease losses, and looming potential budget cuts were significant challenges, but were all met and overcome by a host of heroes: our talented staff, our dedicated Officers and Board of Directors, our tireless Friends Groups, our concerned Mayor and City Council, our State Legislators, and our many partners and supporters.

I am overwhelmed with pride to be part of our team of talented, determined and courageous sailors. Frank Clark said, "If you can find a path with no obstacles, it probably doesn't lead anywhere." We have overcome tremendous obstacles together and continue to defy the odds as we open our 3rd year. Providence Community Library offers an unprecedented return on investment for the City, State, citizens and our children. New dynamic partnerships have developed with other agencies to enhance education, economic development, literacy, and health in our community. I look forward to an exciting year of growth and success and ask for your continued support as we walk this path toward our mutual vision.

Best regards,

A handwritten signature in blue ink, appearing to read "Marcus Mitchell", with a long horizontal flourish extending to the right.

LAURA MARLANE

Executive Director



The idea still exists that libraries are nothing more than repositories for books; quiet places where everyone reads all day and you'll be shushed if you speak above a whisper. Nothing could be further from the truth! Our nine community libraries are active, vibrant community hubs where people come together to listen to concerts, view an exhibit, learn about technology, and yes, we still have books!

PCL's first year was about keeping the buildings open and our resources available to the public. We worked on building and developing relationships both inside and outside of the organization to strengthen ourselves as a team and make ourselves invaluable to our communities. And while that is ongoing, this past year we focused on building our programming. We have developed programs that entertain and educate by listening to what our patrons want. These are just a few of the things we are doing for our neighborhoods:

Bienvenidos Latinos—Latino Program Coordinator Carolina Briones has pulled together a dedicated group of thirty volunteers who are generously donating their time and expertise to offer programs to the Spanish-speaking community including computer classes, book clubs, author signings, movie nights and, a new addition, a GED class in Spanish (which already has a huge waiting list)!

Work with the PPSD—Children's Librarians Gail Stokes, Judanne Hamidzada and Maria Cotto helped to create a reading list for grades K-5 that the Providence Public School Department adopted for all elementary schools in the city! This begins an amazing collaboration with PPSD that will expand into the school year when we will be working closely with the PPSD consultant — charged with implementing the new city-wide literacy program — to tie PCL after-school and summer reading programs to the school curriculum. Thanks to our Program Coordinator, Michelle Novello, for making this possible for us!

New Your City!—This amazing, participatory building project held at Fox Point Library brought together all ages to create a cardboard city that showed the creativity and ingenuity of the entire neighborhood. Parents were pulled in to see these creations and joined in the fun. This delightful project was directed by our superb team at Fox Point: Ann Schattle, Sandy Oliviera, and Julie Sabourin.

Grand Review 2011—Wanskuck Library Manager Cheryl Hunt was instrumental in developing and coordinating programs to educate children about the Civil War (in collaboration with Rob Goldman of Living History). Marcus Mitchell (reenacting Octavius V.Catto) and Patricia Raub (portraying Women on the Home Front) donated their expertise to perform at all of our libraries for the neighborhood children.

Broadband RI Digital Literacy Program—an initiative of the RIEDC—has invited PCL to serve as an anchor institution in a pilot project for expanding digital literacy and broadband access. Federal stimulus money has been dedicated to this four year program that will address public awareness and education about broadband and develop plans to increase adoption rate and usage in all aspects of our lives.

Credit for all of this amazing work is widely shared. PCL is fortunate to be supported by Board members who volunteer their time and expertise to make us a strong library system. The Mayor and City Council have demonstrated not only financial support, but a commitment to our mission that has helped us as we evolve as a new organization. Thank you also to our generous donors who have helped ensure that we can continue to provide programs, services and resources to keep our libraries essential in our neighborhoods. And, most importantly, our amazing staff! Their ongoing dedication to provide excellent customer service, valuable programs and materials that meet the needs of the communities we serve has been instrumental in our growth.

Laura Marlane



Providence Community Library

BOARD OF DIRECTORS

The PCL Board is a coalition of the many constituencies that have a stake in the continued existence and vitality of neighborhood libraries in Providence. To ensure adequate representation of these constituencies, PCL's By-Laws specify that members are appointed by the Friends organization of each of PCL's nine libraries, the Mayor, the City Council, the Governor, and the PCL staff. In addition, up to nine at-large community members are elected by the Board of Directors. The Board elects four of its members to be officers.

Board meetings are held monthly (except for the month of August) and are conducted in accordance with the requirements of the Open Meeting Law of Rhode Island. The Annual Meeting takes place in September.

Board of Directors 2010-2011

Marcus Mitchell **PRESIDENT**

Patricia Raub **VICE PRESIDENT**

Linda J. Kushner **SECRETARY**

Ellen Schwartz **TREASURER**

Christian Caldarone **CITY COUNCIL APPOINTEE**

Gonzalo Cuervo **MAYORAL STAFF APPOINTEE**

Joan Dagle **FRIENDS OF WASHINGTON PARK**

Dale Gorton **FRIENDS OF WANSKUCK**

Althea Graves **FRIENDS OF SMITH HILL**

Alan Gunther **STAFF REPRESENTATIVE**

Owen Johnson **MAYORAL APPOINTEE**

Sister Ann Keefe **SSJ**

Rochelle Lee **CITY COUNCIL APPOINTEE**

Mark McKenney **GOVERNOR'S APPOINTEE**

Maureen Romans **FRIENDS OF MT. PLEASANT**

Deborah Schimberg **FRIENDS OF KNIGHT MEMORIAL**

Sharon Simpson **FRIENDS OF SOUTH PROVIDENCE**

Chris Suchmann **FRIENDS OF ROCHAMBEAU**

Cyndie Wilmot **FRIENDS OF OLNEYVILLE**

Ken Wise **FRIENDS OF FOX POINT**



PCL launched an outdoor concert series at Knight Memorial which was co-sponsored by the Friends of Knight Memorial. Patron and member of the Friends group,

Doug Victor, wrote: "In my 27 years of living off of Elmwood Avenue, I can only count on one hand the times when something of a similar positive community-building event has happened in this area. . . We may have delivered music to the community but I say that we have succeeded at doing something whose ramifications have a greater potential than words on a page or notes delivered through the air. This potential is the real prize that I seek for Elmwood Avenue of which Knight Memorial Library may play a very important part."

Pictured to the right: Voces de los Andes, a family ensemble of traditional Bolivian and Andean music.



PCL Board Officers, from top: 1) President Marcus Mitchell being interviewed by the press; 2) Vice President Patricia Raub portraying "Woman on the Homefront" for the Civil War 150th anniversary; 3) Secretary Linda Kushner overseeing the annual fundraiser; 4) Treasurer Ellen Schwartz at a rally to support PCL .

The Year of Programming

As Executive Director Laura Marlane noted in her letter earlier in this Annual Report, this year PCL focused on building our programming. Of course, that programming has always had a strong foundation in the wonderful activities that the staff in each of the nine libraries presented in those pre-PCL days and continues to present today: Story Times, Poetry Circles, Teen Movie Nights, Chess Clubs, Book Clubs, Cradle to Crayons, Krafty Kidz, Arts and Crafts, Read and Rap, Knitting Circle, Summer Reading Program, Homework Help and tutoring, Magic the Gathering, Spanish Tea, The Artists Loop, and so much more!

But this year we were intent on creating a number of fun and interesting multi-week after-school classes that could be offered at multiple libraries. We began in October with the wildly successful Comics Consortium, where kids learned how to create characters and stories and how to tell those stories graphically (thanks to the RI State Council on the Arts for providing the funding for the first series of classes). Comics Consortium was so popular we are offering it on an ongoing basis.

Then we resurrected the old Whiz Kids program, now known as Cyber Kids, which we couldn't have done without a grant from the RI Office of Library and Information Services, using federal Library Services and Technology Act funds. The Cyber Kids learn varying curricula from computer basics to video editing. This too has become such a popular class at so many neighborhood libraries that it has been offered again and again.

While there isn't room to go into detail, we have to at least mention the Origami classes (surreptitiously teaching botany, Japanese culture, and geometry), joke writing workshops, teen poetry workshops, story-telling workshops, interactive science exhibits (collaborating with the RI Museum of Science and Art), speed dating(!), blood drives, author readings, medical seminars and outdoor concerts.

The programs described above were in English. PCL also presents a substantial amount of programming in Spanish, including literacy and GED classes, monthly Latino film festival, bilingual poetry workshops for teens, computer literacy classes, Latino author signings, the annual Dia de los Ninos bilingual bookmaking contest and even a Photoshop class, all in Spanish at PCL!

GTECH After-School Advantage Labs

Providing free access to computers and high-speed internet connectivity is one of the more important public services that a 21st century library provides. In our first year of operating Providence's neighborhood libraries, we and our patrons benefited greatly from GTECH's generosity. That year, GTECH provided After-School Advantage computer labs to three PCL libraries. That generosity continued this past year with GTECH's donation of computer labs to the children of Olneyville and Smith Hill Libraries, allowing us to expand our Cyber Kids program to many more youth. Thank you GTECH!

Laughing in the Library

PCL held its second annual gala fundraiser in March once more in the beautiful, historic Knight Memorial Library. The guests were entertained by the comedic and musical performances of Tim Crowe, Phyllis Kay, Brian Jones and other characters both real and literary in a production created and directed by Barry Press and Bob Colonna. Thanks are also due to the many marvelous artists who donated their works to the evening's auction. And, of course, the event could not have been a success without the generosity of the evening's sponsors – GTECH, Lifespan, and the Regency Plaza Apartments.

*“You're kidding.
RISD art
instruction
and it's FREE?”*

— MT. PLEASANT PATRON
about Comics classes.



“These two gentlemen [Walker Mettling and Andrew Oesch, Comics Consortium teachers] have done more for my grandson than any teacher at his school this last year.”

— MT. PLEASANT LIBRARY PATRON

*Pictured above: students in the
Washington Park class.*



“How do I sign up for the next time? ... Is there one for adults? I need help uploading my photos! ... I just want to make sure that my son's name is on the sign-up list ... Hey, can I do it next? I wanna do it next!”

— Comments by MT. PLEASANT LIBRARY PATRONS

*Pictured above: patrons cutting the ribbon at the
GTECH lab installation at Smith Hill. Back row:
Councilman Terry Hassett, Mayor Angel Taveras,
GTECH SVP Bob Vincent, PCL Board President
Marcus Mitchell, PCL Board member Mark McKenny.*





Providence Community Library STAFF

ADMINISTRATIVE STAFF

Laura Marlane EXECUTIVE DIRECTOR
Steve Kumins DEVELOPMENT DIRECTOR
Sue Gibbs BUSINESS DIRECTOR
Michelle Novello PROGRAM COORDINATOR
Carolina Briones LATINO PROGRAM COORDINATOR
Maria Melvin HUMAN RESOURCES SPECIALIST
David Dvorchak ADMINISTRATIVE ASSISTANT

FOX POINT LIBRARY

Julie Sabourin LIBRARY MANAGER
Ann Schattle CHILDREN'S SPECIALIST
Sandy Oliviera LIBRARY CLERK

KNIGHT MEMORIAL LIBRARY

Rod Burkett REGIONAL LIBRARIAN
Craig Kaspark ADULT LIBRARIAN
Maria Cotto CHILDREN'S LIBRARIAN
Melissa Rivera CHILDREN'S SPECIALIST
Christine Williams CLERK SUPERVISOR
Yiry Pereyra LIBRARY CLERK
Rose Stetson LIBRARY CLERK
Karina Veras LIBRARY CLERK

MOUNT PLEASANT LIBRARY

Dhana Whiteing REGIONAL LIBRARIAN
Kathleen Flaherty ADULT LIBRARIAN
Adam Misturado ADULT LIBRARIAN
Gail Stokes CHILDREN'S LIBRARIAN
Charlene Williams CHILDREN'S SPECIALIST
Duongrattha Siv CLERK SUPERVISOR
Cheri Melvin LIBRARY CLERK
Anna Parello LIBRARY CLERK
Fidelia Torrez-Cuadra LIBRARY CLERK

OLNEYVILLE LIBRARY

Tom Frawley LIBRARY MANAGER
Antonia Garcia CHILDREN'S SPECIALIST
John Cioci LIBRARY CLERK

ROCHAMBEAU LIBRARY

Tom O'Donnell REGIONAL LIBRARIAN
Martha Maier ADULT LIBRARIAN
Denise Brophy ADULT LIBRARIAN
Judanne Hamidzada CHILDREN'S LIBRARIAN
MaryEllen Munroe YOUNG ADULT LIBRARIAN
Tim McGinn CLERK SUPERVISOR
Bonny Reisman LIBRARY CLERK
Nella Rokicki LIBRARY CLERK
Ayesha Thompson LIBRARY CLERK
Edilberta Trejo LIBRARY CLERK

SMITH HILL LIBRARY

Alan Gunther LIBRARY MANAGER
Jennifer Romans CHILDREN'S SPECIALIST
Amy Ferreira LIBRARY CLERK

SOUTH PROVIDENCE LIBRARY

Linda D'Ambra LIBRARY MANAGER
Betty Nunes CHILDREN'S SPECIALIST
Ethel Stewart LIBRARY CLERK

WANSKUCK LIBRARY

Cheryl Hunt LIBRARY MANAGER
Molly Osborne CHILDREN'S SPECIALIST
Rose Whitely LIBRARY CLERK

WASHINGTON PARK LIBRARY

Lanham Bundy LIBRARY MANAGER
Sara Huber LIBRARY CLERK
Lyndsy Cioci LIBRARY CLERK

INFORMATION TECHNOLOGY

David Sok COMPUTER TECHNOLOGY SPECIALIST
Stephanie Chausse WEB/COMPUTER TRAINING SPECIALIST

MAINTENANCE

Mike Nickerson HEAD, MAINTENANCE
Moses Lilly MAINTENANCE ASSISTANT
Nathan Izzi MAINTENANCE WORKER
Frank Grinchell LABORER
Luis Garcia MAINTENANCE/DRIVER
Keith Paiva CUSTODIAN
Doel Sanchez CUSTODIAN

TECHNICAL SERVICES

Deb Furia CATALOG SPECIALIST
Doug Hinman CATALOG LIBRARIAN
Cynthia Reed AV TECHNICIAN/CLERK
Donna St. Angelo LIBRARY CLERK

“Providence Community Library is an important asset in our community. Meeting Street is pleased to partner with PCL as part of our work with very young children and their families around pre-reading and language skills, and excited to have the opportunity to do this work in the neighborhoods where our families live.”

— JOHN M. KELLY, President & CEO,
Meeting Street



Washington Park's chess club members are mostly kids and young adults, and our chess coach is a young adult who pretty much grew up in our library. We had a visit from Jeff Knight, who lives in RI and has developed and marketed a variation on chess called Plunder Chess. The Plunder Chess slogan is “Taking your game where no brain has gone,” and it takes concentration to understand how this variation changes the game of chess. Jeff patiently taught 21 kids how it works, and somehow, in the midst of it all, we had pizza—pizza alone causes near riot conditions in the library! The kids had a great learning experience. Washington Park is very lucky to have truly excellent volunteers and community partners.

— LANHAM BUNDY Library Manager, Washington Park Library

The Year — BY THE NUMBERS

Number of Libraries	9
Number of Staff	65
Number of Patrons	56,783
Library visits	676,924
Size of Collection	406,519
Total Circulation	553,582
Reference transactions	102,421
Number of Programs	4,565
Program Attendance	56,110
Computers available for public use as of 07/01/09	133
Computers available for public use as of 07/01/10	165
Computers available for public use as of 07/01/11	183
Public use of library computers	213,261 sessions
Knight Memorial Library closings due to lack of air conditioning	26 days
Smith Hill Library closings due to lack of air conditioning	33 days



Smith Hill offered a puppet program during the summer where participants made different kinds of puppets each week. At the end, Sparky of Sparky's Puppets performed a puppet show. Sparky was the final event before Smith Hill held their own puppet show. A whole group of young patrons participated. They were so excited and inspired that they took a box home and spent the next two weeks perfecting their puppet theatre box. On the day of the show they all took turns using their puppet box to put on shows. I love seeing our youth take ownership of the library's programs! We all viewed the program as a breakthrough.

— JENNIFER ROMANS Children's Specialist, Smith Hill Library
Pictured above: Smith Hill patron with puppet box.



Providence **Community** Library
 OUR NEIGHBORHOOD LIBRARIES

BIENVENIDOS
 **Latinos!**

Bienvenidos Latinos! formed in March 2011 in response to a growing need in the community for Latino-specific programs. This group of over 25 active PCL volunteers helps to organize activities, programs and events for the Spanish-speaking community throughout the nine PCL libraries. Under the motto, *together we will achieve a better community*, and guided by Latino Program Coordinator, Carolina Briones, this group has already hosted, taught or offered over 20 programs including workshops on financial literacy, Photoshop, poetry classes, GED in Spanish, a Latino Film festival, and a Spanish Literacy class.

Pictured to the left: Computer class in Spanish.



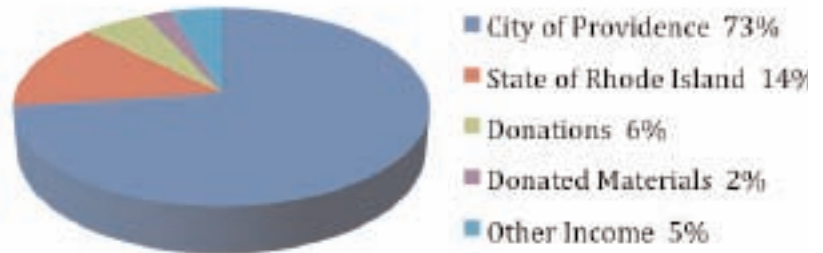
“The Providence Public School Department is excited to be collaborating with PCL in preventing summer reading loss. As we at PPSD implement our new core English Language Arts curriculum and reading program, we will continue to work with PCL and PPSD librarians to support PCL’s efforts to build a robust summer literacy program for Providence youth. This is the beginning of a great partnership.”

— PAULA SHANNON, Acting Chief Academic Officer, Providence Public School District

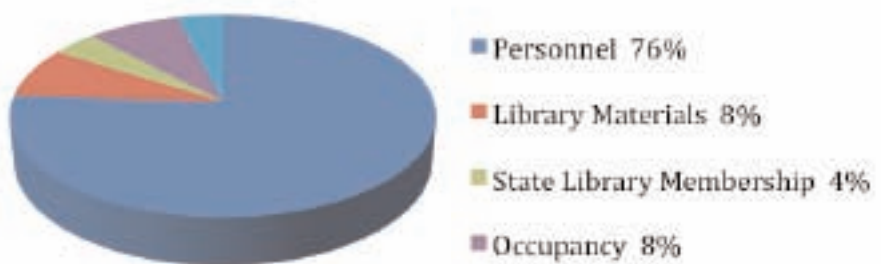
Financial Information

Snapshot of the Providence Community Library finances (unaudited) for fiscal year 2010-2011 (July 1, 2010 – June 30, 2011)

Resources: \$4,767,583



Use of Resources: \$4,767,583



New Your City was a large-scale participatory art project that took place in the Fox Point Library in April, 2011. Led by artist Mary Geisser, families, school groups, and community members of all ages collaborated to construct a city out of cardboard and recycled materials. New Your City contained infrastructure and buildings ranging from the practical to the fanciful, as well as an intricate highway system and even a working drawbridge. The project culminated with a neighborhood celebration and performance by the *What Cheer? Brigade*. This project was funded in part by the Friends of Fox Point Library.

— ANN SCHATTLE, CHILDREN’S SPECIALIST, FOX POINT LIBRARY

Pictured left: What Cheer? Brigade performing to celebrate the completion of the project with more than 100 patrons. PHOTO COURTESY OF ALLISON MOWRER

Providence Community Library SUPPORTERS

Providence Community Library wishes to thank these hundreds of donors who helped make our second year possible and successful (gifts made after July 1, 2010 - June 30, 2011):

\$1,000,000+

City of Providence

\$500,000+

State of Rhode Island

\$25,000+

RI Office of Library & Information Services, using funds provided by the Institute of Museum and Library Services, under the federal Library Services and Technology Act

Mabel T. Woolley Trust

\$10,000+

Carter Family Charitable Trust

Linda and Harold Kushner

June Rockwell Levy Foundation

Henry and Peggy Sharpe

United Way Of Rhode Island

\$5,000+

Billy Andrade - Brad Faxon Charities For Children

Elms Foundation

Joan Gelch

Rhode Island State Senate

\$2,500+

Mary Dexter Chafee Fund

Emma G. Harris Foundation

Frank B. Hazard General Charity Fund

GTECH

Providence Rotary Charities Foundation

Rhode Island State Council on the Arts

Sharpe Family Foundation

\$1,000+

David Berman

Blue State Coffee LLC

Rosalie Fain

Barbara and Leon Goldstein

Robert and Dorcas Greene

Anna and Cyrus Highsmith

Lucy Holcombe

David Isenberg

Marie Langlois

Salvatore Laterra

Eleanor and David Lewis

Lifespan

Sara and Jack McConnell

Mark McKenney

Justine Metz and Kerrie Fisette

Regency Plaza

Herman Rose

Deborah Schimberg

Pearle and Martin Silverstein Foundation

Shivan and Jyothi Subramaniam

Frederick C. Tanner Memorial Fund

Al and Naida Weisberg

Harriet Wicke

Otto York Foundation

\$500+

Helene and Bertram Bernhardt

Foundation

David Cicilline

Stephen Ciesluk

Mary Clark

Polly and Robert Daly

Wendy Drumm

Enivar Charitable Fund

Jonathan and Ruth Fain

Gertrude N. and Seebert J. Goldowsky

Foundation

Freda Goldman

Berne Greene

Elizabeth Hollander

Steve Kumins and Nancy Pinn

Lisa LaDew and Bill Morris

Brooke and Eugene Lee

Mary Lovejoy and John Whistler

Esther E. M. Mauran

Norman and Dorothy McCulloch

Marjorie and Sattar Memon

Suzanne and Terrence Murray

Calvin Oyer

Pawtucket Red Sox Baseball Club, Inc.

Katherine and Peter Scheidler

John Schlinke and Carol Lasch

Keith and Rosmarie Waldrop

Nina Wang and Richard Doyle

John and Susan Weston

Lucinda Wilmot

Myrth York and David Green

\$250+

BCLIR

Ann Byrne

Christian Caldaron

Richard and Inge Chafee

City Kitty Veterinary Care For Cats

Joan Dagle and James Kittredge

Murray and Judith Danforth

Amato and Kathleen DeLuca

Jonathan and Julie Duffy

Kathryn Fisler

Edward and Gail Fogarty

Robert and Wendy Fournier

Jordan Frank and Laura Levine

The Friendship Fund (Eastside

Marketplace)

Jay Glasson

Anne Grant and Phil West

Clare and Vartan Gregorian

Douglas and Nancy Hinman

Betty Jaffe

Lynette Labinger

Barbara and George Levine

Doris Licht and Ronald Borod

Terrance and Dorothy Martiesian

Paul McKenney

Mildred McLean and Daniel Waugh

Sarah and Pierre Morenon

John Murphy

Alix Ogden and John Simmons

Sandy Oliviera

Marcia Riesman

Pablo and Diane Rodriguez

Ellen Schwartz

George and Janet Scurria

Sharon and Calvin Simpson

Laszlo and Agnes Somlo

Paul and Joan Sorensen

Ann Sterling

Abigail Test

Joseph and Ginette Walsh

Ken Wise

Richard Wong and

Barbara ScheppsWong

George Zoglio

Melvin and Janet Zurier

\$100+

AAA Southern New England

ABM Group

Joan and Richard Abrams

Rep. Edith Ajello

Carole and Zane Anderson

Jim Baird

James and Victoria Barnes

Neil and Cheryl Bartholomew

George Bayliss

Marjorie Beach

Irwin and Adeline Becker

Robert Bedick and Marsha Miller

Anita Berger

Andrew and Beverly Blazar

Howard and Martha Boksenbaum

Books On The Square

Deborah Brayton

Donald and Elizabeth Breed

Denise and Vincent Brophy

Anna and Andrew Browder

Judith Brown

Lanham Bundy

Phyllis Burke

Rod Burkett

Roger Carlsten and Clare King

Peter and Lucia Gill Case

Stephanie and Paul Chausse

Marie Clarke and Banice Webber

Steven and Linda Cohen

Kathleen Cornely and David Moss

William and Hannelore Crossgrove

Timothy and Sandra Crowe

Gonzalo Cuervo

Diane Curran and Linda Katz

(continued next page)

“Books keep me off the streets... there really is another side of the fence!”

— WANSKCUK LIBRARY PATRON



“As the Commander of Providence Police District 7, I have two Providence Community Libraries in my area of responsibility, Smith Hill and Wanskuck. Each of these libraries plays an important civic and educational role in the communities they serve, and I thoroughly enjoy working closely with both the staff and residents who frequent them. While pursuing my own masters degree I spent many days at the Smith Hill Library and found the staff most accommodating.”

— LIEUTENANT DANIEL GANNON, District 7 Commander

In-kind Contributors

GTECH

The Providence Journal Co.
Adler Pollock & Sheehan P.C.

Robert Brooks, Esq.

Avital Chatto, Esq.

Jay Glasson, Esq.

Lynette Labinger, Esq.

Narragansett Brewing Co.

Angell Fine Arts, Ltd.

Emmy Bright

Lanham Bundy

Corey Grayhorse

Jori Ketten

Delia Kovac

Jennifer Hrabota Lesser

Martha Maier

Andrew Oesch

Megan Seiter

Alyssa Holland Short

Jason Tranchida

Al Weems

... and the many readers who
have given their treasured
books to our libraries.



Kevin and Tonya Curran
John and Dorothea Curtin
Mary Curtin-Clinker and Duane Clinker
Lewis and Betty Dana
Hadassah and Phillip Davis
Elizabeth Dennigan
Christopher and Courtney Dupaul
Kathryn Eberstadt
Ruth Edwards
Charles and Adele Eil
Stuart Einhorn and Carol Golden
Susan and Peter Erkinen
Barbara and Walter Feldman
Charles Fitzgerald
Ronald and Heather Florence
Mary Frappier
Deborah Furia
Garris Photography
Lawrence and Helene Gates
Susan Gibbs
Sarah and Tom Gleason
Richard Gregory and Louise Thorson
Geoffrey and Sheri Griffin
Alan Gunther
Steven Hamburg and Sally Barker
Johanna Harris
Hope and David Hirsch
Marcia and Howard Hirsch
Robert and Laura Howe
Elizabeth and Michael Huber
Amanda and Jeremy Isenberg
Jen Iwasyk and Robert Bozikowski
Sen. Paul Jabour
Barry and Ellen Jagolinzer
Robert and Dorothy Jungels
Coppelia Kahn
David Karoff and Barbara Hunger
Craig and Marcia Kaspark
Phyllis Kay and Richard Donelly
Sister Ann Keefe
Sarah Keisling and Henry Gould
Lynn Kent
Susan Korte
John Ladd
Ruth and George Landow
John Laterra and Amy Fulton
Jane and Raymond Lavoie
Seymour Lederberg
Janice Libby
Otto Liebmann and Rebekah Garnder
Frederick and Ursula Love
Luethi-Peterson Camps Inc.
Anne Maier
James Maier
Laura Marlane
John and Marcie Marston
Karen Mcaninch and Steve Markovitz
Bob and Eileen Medeiros
Anatoly and Bela Miller
Robert and Karen Morrow
Councilman Nicholas Narducci
Pearl Nathan
George Nee and Ann Sliney
Tim and Kelly Nevins
Michelle Novello
Betty Nunes
Thomas Oakes and Patricia Fuller
Jill Pearlman and Stephen O'Shea
Elizabeth Perkins
Deborah and Elliot Perlman

Sen. Rhoda Perry
Bernadine Pinto
Patricia Pollitt
Barry and Rebecca Preston
Mercedes Quevedo
Pamela Quigley
Patricia Raub and Robert Goff
Clay Rockefeller and Manya Rubinstein
Maureen and Neil Romans
Amelia Rose
Michael Rosen
David and Holly Rothemich
Hillary and William Salmons
Juergen and Anne Schulz
George and Terry Seidel
Gretchen Dow Simpson
Mitchel and Katherine Sklar
Susan Smulyan
Sodexo
Council President Michael Solomon
Mary Speare
Darryl and Ann Stahl
Selma Stanzler
Jerome and Hadassah Stein
Vivian Stone
Carolyn Swift
Kim Twitchell
Elliott and Esther Urdang
Herman and Adele Vandenburg
Ann and Bob Von Der Lippe
Alan and Marie Weiss
Michael White and Jane Desforges
Christina Zarcadoolas
Sam and Lauren Zurier
Toots Zynsky and Ernesto Aparicio

\$1+

Virginia Adams
Betty Adler
Marc and Janice Adler
Paul Adler and Lori Basilio
Lucien and Kristi Agniel
Engin and Tuna Akarli
Hamilton and Irene Allen
James and Susan Allen
Peter and Susan Allen
Norma Anderson
Leon Andrews
Susanne Angelillo
Michael and Jenifer Arden
Robert Arena
William Arvanites and Naomi Foster
Charles and Eliabeth Bakst
James Barfoot and Nancy Nicholson
Meris Barreto
Katherine Bergeron and Joseph Rovon
Robert and Mitzi Berkelhammer
Doug Best and Maureen Reddy
Christopher and Roberta Bickford
Murray and Judith Blackadar
Gloria Bloom
Edwin and Margaret Boger
Joan Boghossian
Edward and Anne Bozzi
Derek and Sara Bradford
Ruth Breindel
Patricia Brennan
Carolina Briones
Daniel and Lisa Brososky
Erika Brown
Steven Brown
Alden Bumstead
Phyllis Burke
Dan and Jayne Cahill
Gail and Renato Calandrelli
Jane Carroll
David Cashman
Donna Cassidy and Robert Murphy
Eugene and Lynette Charniak
Jeffrey and April Chase-Lubitz
Avital and Andrew Chatto
Katherine Chenard
Citizens Financial Group
Roger and Beverly Clark
Daten Cohen and Terri Spisso
Enid Cohen
Carol Cook
John and Margaret Corrigan
Meredith Costa
Karen Daigle
Marjorie Day
Cornelis and Kathryn De Boer
Veda Decof
Corsino and Mona Delgado
Paola Dematte
Jim DeRentis and Brett Smiley
Gerald DeSchepper
Raymond Dettore
David and Sally Dillon
Ann Dodge
Bruce and Doris Donovan
Paula Donovan
Carla Dowben
Patricia Duque
Cliff Dutton and Barbara Tannenbaum
Patricia Dwyer and Gregory Frazier
Rebekah Eckstein
Jean Edwards
Charles and Eleanor Elbaum
Gregory Elliott and Susan Cunningham
James English and Betsy Purinton
Constantin Eretescu
Allan and Dorothy Erickson
Barbara Etchingham
William Ewen
Exxon Mobil Foundation
Gregory and Ann Faith
Eric and Dana Falk
Temple Fawcett
Allan and Barbara Feldman
Barbara Feldman
Charles Feldman
Clifford Fields and Angela Simpson
Robert and Ellen Florin
Kathie Florsheim
Helen Flynn
Faith Fogle
Muriel Forit
Stephanie Fortunato
Andrew and Christine Foster
David and Virginia Fox
Tom Frawley and Lisa Gendron
Bob Frederiksen
Frances Friedman
Friends Of Rochambeau
Omar Galarraga and Sara Dorsch
Sandra Gandsman and Arnold Herman
James and Margaret Gardner
Murray and Rosalyn Gereboff
Michael Gerhardt and Doree Goodman

*“The Internet is the
transport of knowledge and
opportunity. Broadband RI
is pleased to work with
PCL staff to provide digital
literacy training to our
communities. Together
we realize that increased
broadband adoption is
not just an enabler or
economic development
but it has the potential to
dramatically transform
communities.”*

—SUART FREIMAN, Program Manager,
Broadband RI (an initiative of the RI
Economic Development Corporation)

Jodi Glass and Ruth Horton
 David Gleicher and Luz Bravo-Gleicher
 Maurice and Yetta Glicksman
 Rachel Goldberg and Zachary Nelson
 Zelda Goldman
 Dale Gorton
 Sam Grabelle
 Bob and Mimi Grant
 Judith and Samuel Greenblatt
 Suzanne Grossman
 Frederick and Olivia Guggenheim
 Donald and Shirley Gunther
 Leslie Gutterman and Janet Engelhart
 John Hafferty
 Marguerite and Spencer Hall
 Janice and Robert Harrall
 Burr and Susan Harrison
 Daniel Harrop
 Elisabeth Head
 James Head
 Dan and Sharon Hendriksen
 Timothy Herbert
 Himalayan Group, Inc.
 Ellen Hoch
 Joseph Hoefflerle and Sabrina Witherby
 Kevin Horan
 Donald and Dorothy Horowitz
 Catherine Imbriglio
 Martin and Betty-Ann Israelit
 Douglas Itkin and Anisa Raoff
 Karl Jacoby and Marie Lee
 Judy and Stephen Jagolinzer
 Bethany Johns
 Brian and Judy Jones
 Vivien and Lauren Jones
 Leslie Kane and David Jaffe
 Gwen Kangis
 David and Elizabeth Kaplan
 Barbara Karoff
 Tamar Katz and Ed Hardy
 Gabor Keitner
 Mary Louise Kennedy
 Maureen Kenner
 John Kent
 Rich and Claudia Kerbel
 Kenneth and Nancy Kirsch
 Rebecca Kislak and Joanna Brown
 Julia Kliever
 John and Karin Kosterlitz
 Laurence and Alisa Kotler-Berkowitz
 Shelley Kraman
 Maureen and Howard Krasnow
 Richard and Bernice Kumins
 Diana Kushner
 Nina Kushner and Joon Bai
 Kathy Kushnir
 Audrey Laforge and Francis Leazes
 Francis Lalli
 Cornelia and Robert Lanou
 Matthew Lawrence
 Marjorie Lederer
 Rochelle Lee
 Jean and Kevin Lehman
 Varda and Robert Lev
 Judy and Mayer Levitt
 Kevin Lindamood and Colleen Zeitz
 Lewis and Edna Lipsitt
 Allen and Terry Litchman
 Sylvia Loferski
 Ellen and Frank Longo

John and Emma Lopes
 Deirdre Lovecky
 Karina Lutz
 Ellen Lynch
 Karen and Brian MacCracken
 Eloise and Paul Mahoney
 Martha Maier
 Eugenia Marks
 Carole and Barry Marshall
 Joan Martin
 Saul Martin
 Marcia Mattingly
 Mary Ann Mayer
 Anne McAuliffe-O'Donnell
 Louise McCaffrey
 Marian McClintock
 Mary and Donald McClure
 Mary McEnery
 Carmel McGill
 Michael McGlynn
 Jane McIlmail
 Michael and Florence McKenna
 Charles McNeil
 Miriam McRobb
 Govind Menon
 Alan Metnick
 Kennon Miller and Jennifer Newkirk
 Eleanor Miner
 Liz Morancy
 Lara Moritz
 Kenneth and Anna Morrill
 David Moscarelli and Lenke Wood
 Amy Moses
 Susan and Samir Moubayed
 Rosemary Murphy
 Sean and Christin Murphy
 Dennis Nally
 Muza Negur
 Rosalie Nocera
 Michelle Novello
 Ken Orenstein and Barbara Feibelman
 Jay and Barbara Orson
 Marc and Deborah Page
 David and Elizabeth Panciera
 Ann Patrick
 Drake Patten
 Sharon Paul
 Joseph and Susan Peckham
 Sheela Percelay
 Eric and Jane Peterson
 Carolyn Piatek
 Lawrence and Carrie Platt
 David Pomerantz
 Eliot Porter
 Diane Postojan
 Mary Potter
 Ruth Prager
 Privacy Journal
 Kurt Raaflaub and Deborah Boedeker
 Ann Marie Reddy
 Caroline Reed
 Frances Regas
 Bonnie Reibman
 Suzanne Reilly
 Michael Rich
 David and Jennifer Riedel
 Rena Ries
 Michelina Rizzo
 Brenda and Bernard Rodgers
 Karen Romer

Dario Roque
 Lenore Rose
 Ruth Rosen
 Kathryn Roth
 Sharon Rounds
 Griffin Rouse
 John and Wendy Roworth
 Mark and Christine Rubinstein
 Barbara Rutenberg
 Salvatore and Irene Salvo
 Clark and Carole Sammartino
 Harriet Samors
 Megan Sandberg-Zakian
 Christopher Sanzo and Roberta Groch
 Michael Scanlon
 Steven and Naomi Schechter
 Albert and Barbara Scheiner
 Barry and Libby Schiller
 Helen and Jacob Schinazi
 Duane and Mary Schmidt
 Daisy Schnepel and Paul Evans
 Robert Scholes
 Hinda Semenoff
 Sam and Linda Shamoon
 Jane Sharfstein
 Ellen Shatter
 Bruce and Judith Shaw
 Carol and Bob Sholler
 Brian Shure and Evelyn Lincoln
 Yvonne Smart
 Nicholas Sofios
 Lionel Soracco
 Mary Staples
 Gloria Strazar
 Marlene Strom
 Daniel and Rose Subotnik
 Barbara S. Sucoff
 Grace Tagliabue
 Alex and Valerie Taylor
 Janet Downing Taylor
 Nancy Taylor
 Mark Tracy
 David and Susan Tremblay
 Lynne Tucker
 Chris and Lisa Van Allsburg
 Susan Vancura
 Daniel Varin
 Ricardo and Cynthia Vestuti
 Kasey Vivenzio
 Rita Warnock
 Peter and Judith Wegner
 Eugene and Arline Weinberg
 Barbara Weindling
 Alice and Peter Westervelt
 Charles and Joy Wharton
 Nancy Whit
 Dhana Whiteing
 Ruth Whitford
 Cherine Whitney
 Susan Wieland
 Gloria Williams
 Lea Williams
 Meaghan Wims
 Ada and Harold Winsten
 Rosemary Wittels
 Richard and Mary Worrell
 Alex Yakubovskiy
 Kahlil Yanes and Jason Jindrich
 Matthew Zuckerman



“A world without books is like a desert. If there is hope for peace in Providence, it is surely inseparable from a vibrant community that reads and uses our community libraries.”

—TENY GROSS, Executive Director, Institute for the Study & Practice of Nonviolence



Everyone in Providence has a library!



WANSKUCK
233 VEAZIE STREET
401-274-4145



SMITH HILL
31 CANDACE STREET
401-272-4140



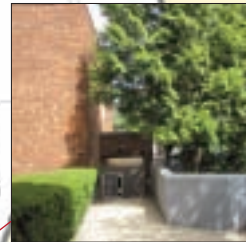
ROCHAMBEAU
708 HOPE STREET
401-272-3780



MOUNT PLEASANT
315 ACADEMY AVENUE
401-272-0106



OLNEYVILLE
ONE OLNEYVILLE SQUARE
401-421-4084



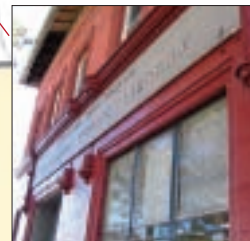
FOX POINT
90 IVES STREET
401-331-0390



KNIGHT MEMORIAL
275 ELMWOOD AVENUE
401-467-2625



SOUTH PROVIDENCE
441 PRAIRIE AVENUE
401-467-2619



WASHINGTON PARK
1316 BROAD STREET
401-781-3136



**PROVIDENCE
COMMUNITY
LIBRARY**

P.O. Box 9267
Providence, RI 02940
401-467-2700
www.provcomlib.org